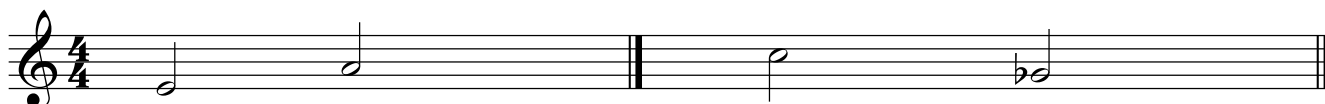


# Gondwana Choirs 2011 Auditions

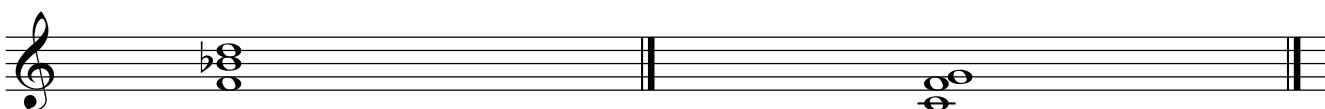
## Treble Voice Version - Auditioner

### SECTION 1: PITCH PATTERNS

I will play some pitch patterns. Please listen to them once and then sing them back to me. If you would like to hear them again just ask.

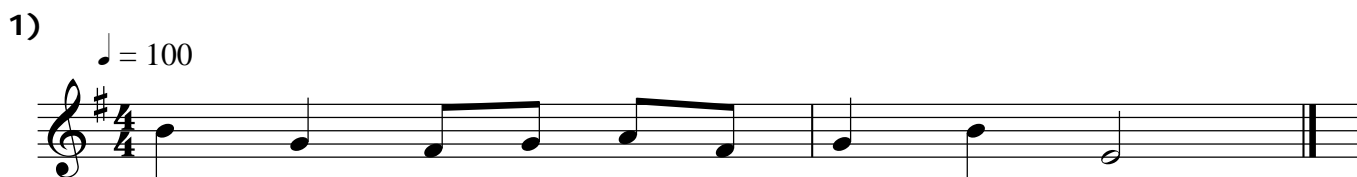


I will now play some chords. Please listen to each chord carefully and then sing back all of the notes in the chord that you can hear. I will play each chord for you twice, if you would like to hear them again just ask.



### SECTION 2: MELODIC MEMORY

I will play two short melodies for you. Please listen to each melody twice and then sing it for me. There are no words so you can sing them to "lah". (All candidates should start with exercise one and progress through as many exercises as they are able.)



SECTION 3: SINGING THE LOWER PART

On the sheet you will see a section marked "singing the lower part".

This is how the part sounds (play the lower part).

A) Please sing the part for me several times until you feel comfortable with it  
(assist if necessary)

B) Now sing it again whilst I play another part on the piano. (play both hands)

C) This final time, sing the part alone whilst I play the upper part only

1)

Musical notation for exercise 1, consisting of two staves in 4/4 time. The upper staff contains a melody of quarter notes: G4, A4, B4, C5, B4, A4, G4. The lower staff contains a bass line of quarter notes: G3, F3, E3, D3, C3, B2, A2.

2)

Musical notation for exercise 2, consisting of two staves in 4/4 time with a key signature of two sharps (F# and C#). The upper staff contains a melody of quarter notes: D4, E4, F#4, G4, A4, B4, C5, B4, A4, G4, F#4, E4, D4. The lower staff contains a bass line of quarter notes: D3, E3, F#3, G3, A3, B3, C4, B3, A3, G3, F#3, E3, D3.